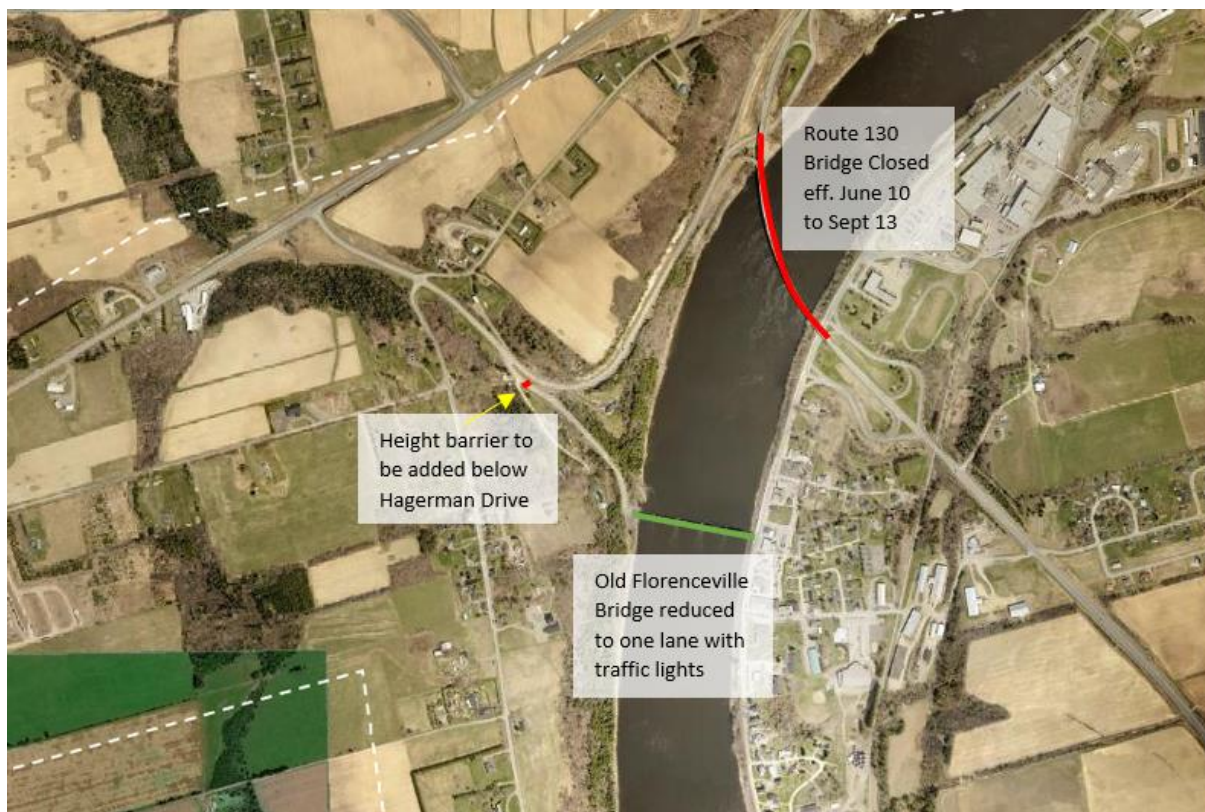


Route 130 Bridge Closure / Old Florenceville Bridge Traffic Lights

The Province's Department of Transportation and Infrastructure (DTI) will be closing the Route 130 bridge effective June 10, and anticipate re-opening it by September 13. They will be reducing traffic to one lane on the Old Florenceville Bridge (Covered Bridge) with traffic lights during this time. DTI will be providing signage to clarify the traffic pattern changes and Trans Canada Highway detours, and will be monitoring the traffic flows to make adjustments as required. The maximum weight restriction on the Old Florenceville Bridge is 5 tonnes (5000 kg). Please ensure your vehicle is below this weight limit before crossing the Old Florenceville Bridge. A height restriction barrier of 4 m will be placed near the top of Jim Davis Drive to prevent oversized vehicles from reaching the Old Florenceville Bridge.



Schools are working with DTI to determine bus schedules during this time and will inform those affected accordingly.

The Florenceville-Bristol Fire Department will use mutual aid services from the Centreville Fire Department to ensure any calls for the West side of the river are covered.

Please do not use parking lots or private roads as a detour around the traffic lights, as this is not a safe situation for pedestrians, parked cars or equipment.

We appreciate your patience while necessary upgrades are made to the Route 130 bridge. Drive carefully!